

A stylized graphic of a globe on the left side of the page. The globe is composed of concentric circles. The innermost circle is dark blue and shows a map of Southeast Asia and Australia in a light green color. The middle ring is a lighter blue. The outermost ring is a dark grey-blue. The text is overlaid on the globe.

# Low Carbon - Climate Resilient Development

A Programme of  
Development Alternatives



Development Alternatives





# Low Carbon-Climate Resilient Development Programme

## Research and Assessment

Identifying the vulnerabilities of communities and ecosystems to climate change and the potential of clean technology solutions to reduce GHG emissions

## Demonstration of Scalable Models

Building on new and indigenous solutions to demonstrate the potential of 'AdMit' benefits at scale (technologies, practices and institutional models).

## Training and Capacity Building

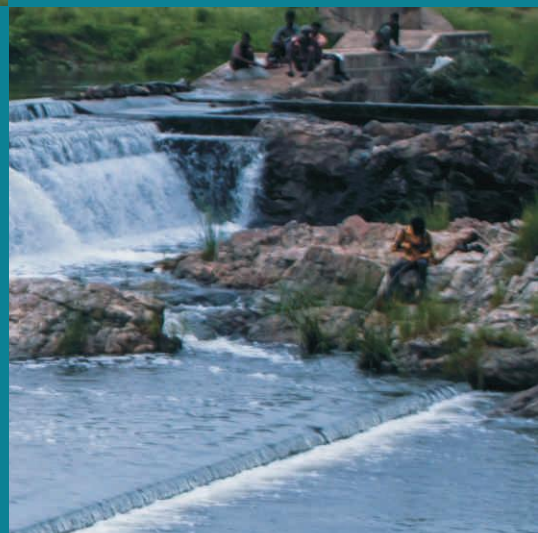
Designing capacity building solution for local communities, entrepreneurs and decision makers to adopt, implement and replicate climate change adaptation and mitigation strategies.

## Climate Change Communications

Disseminating climate change information to vulnerable communities, scientists and decision makers. Creating solution for climate change communications at scale.

## Policy Influence and Advocacy

Strengthening community based institutions and influencing decision making processes to mainstream climate change concerns in development planning at local, sub-national and national levels.





# Climate Change Adaptation and Resilience

Enabling vulnerable rural communities to cope with climate change impacts through

- Participatory natural resource management methods
- Climate resilient agriculture practices
- Capacity building and information services
- Knowledge sharing platforms and development planning support





## Low Carbon Development

Promoting sustainable production and consumption practices to contribute the below 2° C goal

- Promoting clean energy technologies and solutions for resource efficiency and carbon saving in construction and energy sectors
- Innovating, sourcing and adapting new and improved green technologies
- Packaging green technologies into business solutions for MSMEs
- Influencing policies for the promotion of cleaner production processes





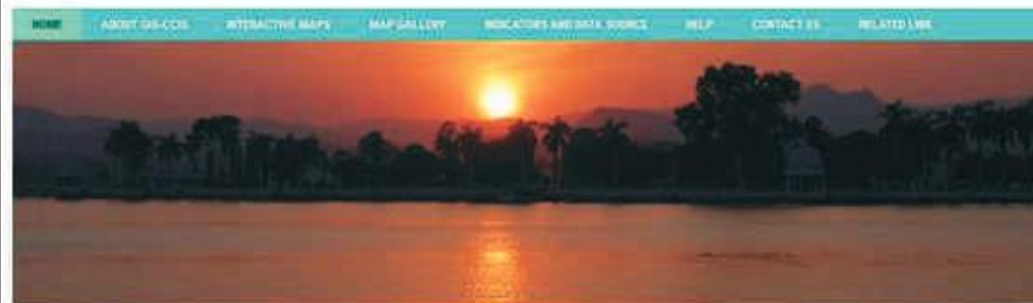
## Research & Assessment

- Identification of climate change vulnerabilities at village, district and state levels
- Impact assessment studies
- GIS based climate information systems
- Identification of good practice adaptation and mitigation solutions
- Research and analysis of sector-specific potential and solutions to incorporate resource and energy efficiencies



### GIS based Climate Change Information System (GIS-CCIS) - Madhya Pradesh

An Innovative tool for Planning & information dissemination



Welcome to GIS based Climate Change Information System (GIS-CCIS) of Madhya Pradesh!

The GIS based Climate Change Information System (GIS-CCIS) for Madhya Pradesh is an information tool designed and developed, to manage & visualize the data and information related to climate change. GIS-CCIS is a knowledge repository which comprises of data/information on environment, climate and socio-economic indicators and can be accessible to various stakeholders working in the field of climate change & environment including State & District level departments, research institutions etc. The information system depicts climate change vulnerabilities at district level and provides sectoral strategies. GIS-CCIS is a dynamic system that can be updated with new sources of environment and climate data/information to meet specific user demands.

INTERACTIVE MAPS

Supported by



Designed & Developed by



Innovations in resource efficient technologies for low-carbon construction and renewable energy solutions

Assessment of climate impacts, community perceptions and coping capacities

## Demonstration & Implementation of Adaptation-Mitigation Measures

- Sustainable and Resilient Agriculture
- Soil and Water Conservation (Integrated Watershed Development)
- Low Carbon Construction
- Decentralised Renewable Energy Models



**0.7 million tonnes  
of carbon saved  
annually**

**6,800 hectares of  
land under  
sustainable  
management**

**800 million litres  
of water conserved  
annually**

**0.8 million tonnes  
of industrial waste  
utilised for  
productive use**

**0.4 million kWh  
green electricity  
generated annually**

**1.4 million tonnes of  
top soil conserved**



# Communication & Awareness

## Shubhkal Campaign

- Community radios for climate change and risk communications
- Rural Reality Shows on climate change adaptation
- Village renewable energy promotion campaigns
- Communication tools and packages for communities and local governments
- Multi-stakeholder dialogues and feedback systems



Outreach to more than 3 million people through 40 radio stations and awareness campaigns across 7 states in India



## Training & Capacity Building

- Entrepreneurs: Business and technology skills for low carbon products and services delivery in construction and energy sectors
- Farmers and rural communities: Package of locally relevant adaptation practices (PoP)
- Community radios: Climate change communications
- Local governments: Climate integration in development planning
- Government departments: Technical support for implementation of National and State Climate Action Plans



**30% enhanced  
agriculture  
production and  
incomes for farmers  
is over 200 villages**

**Over 2000 farmers  
trained on climate  
resilient agriculture**



## Policy & Planning

- Community based Climate Adaptive Planning
- Mainstreaming CC concerns in district development planning
- Technical support to state governments for integrating climate change in planning & implementing State Action Plans for Climate Change
- Technical support to state governments for accelerating adoption of low carbon construction technologies
- Planning for urban resilience



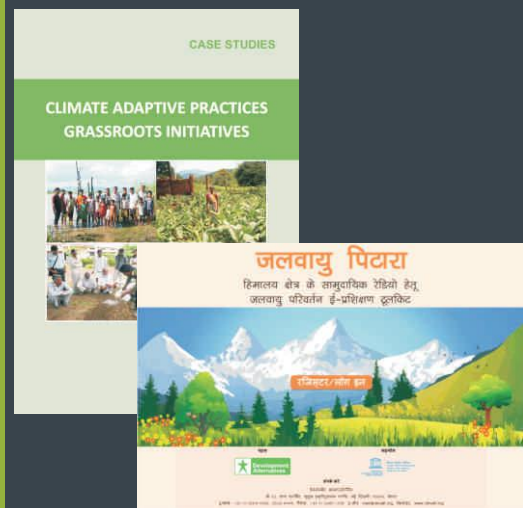
**Over 18,000 village  
local government  
representatives  
educated on  
climate adaptive  
planning**

**Knowledge and  
capacities of 400  
professionals and  
public officials  
enhanced on  
climate resilient  
planning**



## Knowledge Sharing & Advocacy

- Building collaborative perspectives, knowledge sharing and information dissemination
- Building networks, alliances and partnerships
- Developing policy influence and advocacy toolkits
- Policy advocacy on climate change at national, regional and international level



MAINSTREAMING  
ALTERNATIVE  
PERSPECTIVES

Towards Sustainable Economies



TARAGram  
YATRA 2015

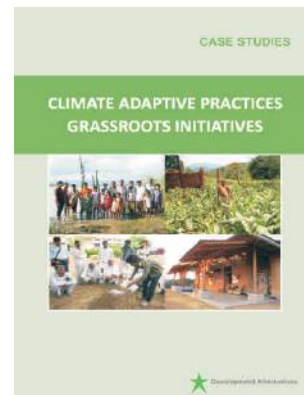
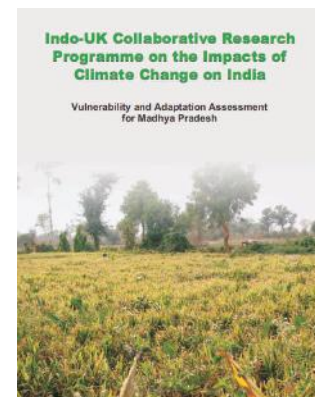
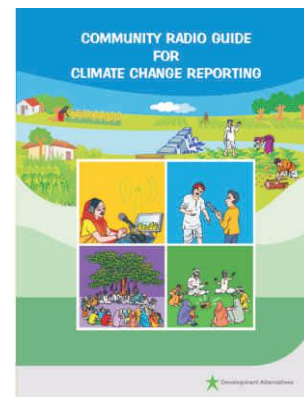
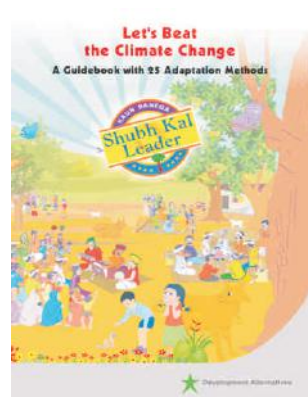
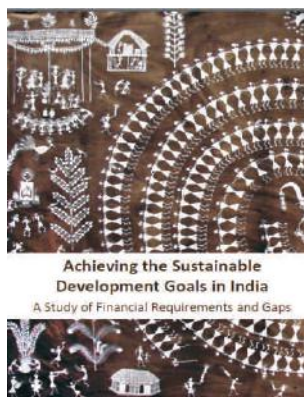
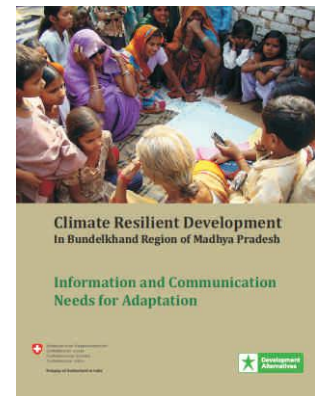
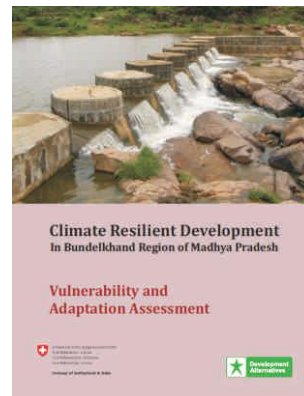
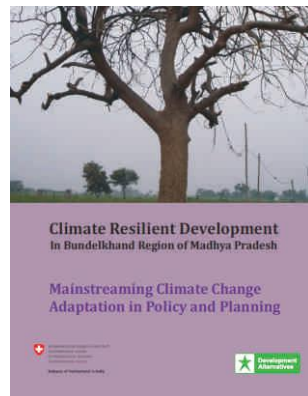
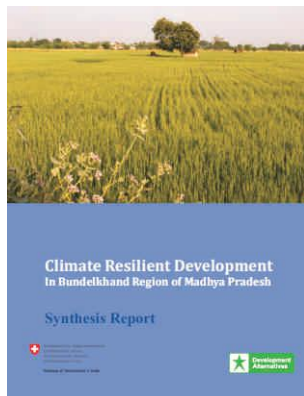
inspiring sustainability

trialogue  
2047

© Development Alternatives

People • Planet • Profits  
Government • Business • Civil Society  
Yesterday • Today • Tomorrow™

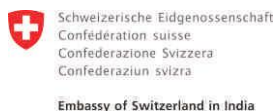
# Publications







## Partners







**[www.devalt.org](http://www.devalt.org)**

**Development Alternatives (DA)** is a premier social enterprise with a global presence in the fields of green economic development, social equity and environmental management. It is credited with numerous technology and delivery system innovations that help create sustainable livelihoods in the developing world. DA focuses on empowering communities through strengthening people's institutions and facilitating their access to basic needs; enabling economic opportunities through skill development for green jobs and enterprise creation; and promoting low carbon pathways for development through natural resource management models and clean technology solutions.



**Development Alternatives**

World Headquarters  
B-32, Tara Crescent, Qutub Institutional Area  
New Delhi 110 016, India  
Tel: +91 11 2654 4100, 2656 4444, Fax: +91 11 2685 1158  
Email: [mail@devalt.org](mailto:mail@devalt.org), Website: [www.devalt.org](http://www.devalt.org)

 *Printed on 100% recycled*